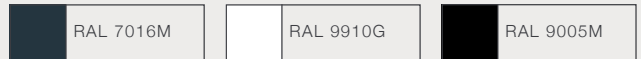


**Tel** 01925 571557  
**Email** info@hausglass.co.uk  
**Web** www.hausglass.co.uk  
**Showroom** 102 Gainsborough Road,  
 Warrington, Cheshire, WA4 6BN



- Lead times for standard colours 4/6 weeks.
- Lead times for non standard colours 6/8 weeks.
- Standard colours - Anthracite grey 7016M, White 9910G, Black 9005M.
- Standard Handle - Lift Handle.
- Standard Handle colours – White, black or satin.
- All the above can be colour coded to match any frame colour.
- 10 year warranty.



### Performance

**U-Value** - down 1.5W/m<sup>2</sup>K using double glazed unit. Triple glazing can bring it down to as low as 1.1W/m<sup>2</sup>K

**Security** - RC2, PAS24 and secured by design

**Air Tightness** - Class 2 (600pa)

**Wind resistance** - Up to class C3

**Water resistance** - Up to class 9a (600pa)

**Acoustic performance** - Rw (C;Ctr) = 35 (12; -6)/39 (-1; -3)

**Glass thickness** - Up to 42mm

### Technical

**Vent** - 94mm

**Meeting profile** - 76mm to 156mm

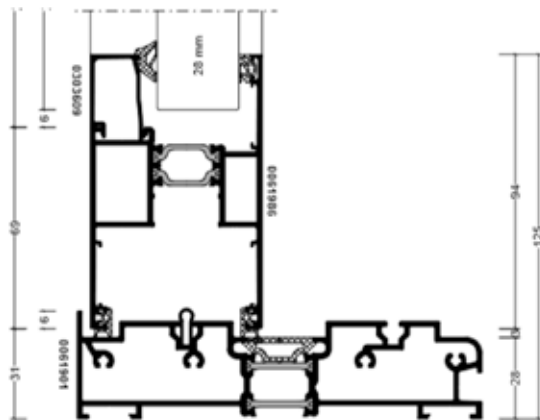
**Meeting section** - 69mm/98mm 194mm for 4 doors

**Frame depth** -  
 Monorail & duo 139mm  
 3 rail 210mm

**Maximum height** - 2700mm

**Vent depth** - 59mm

### 1 fixed 1 sliding



### 1 fixed 2 sliding - triple track (all 3 sliding)

